



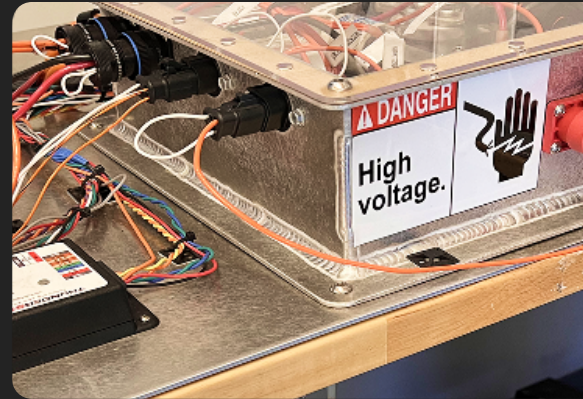
HIGH VOLTAGE LEVEL 2

Live Virtual Series

Perfect for experienced service professionals, this advanced course sharpens your expertise in operating, repairing, and maintaining high-voltage vehicles —focusing on advanced safety techniques, proper test equipment use, and creating an electrically safe workplace.

To enroll in the Level 2 Certification Series, you must complete the Level 1 online course at least 7 days before the first Level 2 live session.

LEGACY
EV



Live Session 1: Intro to EV & Workplace Safety Systems

Covers EV risk assessments, inspections, and intrinsic safety features. Learn high voltage component basics, safety protocols, and safe work practices around EV systems.

Required PreWork: Module 1 – EV Safety Foundations

- ✓ High Voltage Components & Safety Systems
- ✓ Risks Associated with EV Repair
- ✓ Risk Assessments and Inspections



Live Session 3: EV Maintenance Flow & Electrical Testing

Gain hands-on skills in grounding, isolation testing, and restoring high voltage systems. Includes bonding tests, insulation resistance, and safe system reconnection.

Required PreWork: Module 3 – High Voltage Batteries & Testing

- ✓ High Voltage Battery Management
- ✓ Potential Equalization and Bonding
- ✓ Grounding and Isolation



Live Session 2: Establishing an Electrically Safe Work Condition

Learn procedures for safely de-energizing EV systems, including Zero Voltage Verification (ZVV), LOTO, and proper disconnection. Includes OSHA-compliant safety practices and PPE/tool selection.

Required PreWork: Module 2 – Electrically Safe Work Practices

- ✓ Electric Vehicle Maintenance Flow
- ✓ Personal Protective Equipment (PPE) Testing and Selection
- ✓ Electrical Instrument Testing and Selection



Live Session 4: High Voltage Safety Skills Assessment

Participants will demonstrate their ability to safely shut down high voltage systems, perform Zero Voltage Verification (ZVV), and follow OSHA-compliant practices. Certification requires proper PPE/tool use, circuit disconnection, and voltage verification.

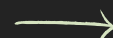
Required PreWork: Level 2 High Voltage Safety Skills Assessment

- ✓ Score 80%+ on Multiple Choice Exam



- Teaches to ASE/XEV2 Standards and includes enrollment in the ASE Test.

Get Started
Today!



legacyev.com